



Art. 43016 16lt



Art. 43024 24lt



The air-operated drainers are ideal for quick engine oil change (by means of suction with the probe) of any motor vehicle: auto, truck, tractors, small aircraft, boats, etc. Once depressurized, they **work autonomously anywhere because they do not require continuous connection to the compressed-air system.**

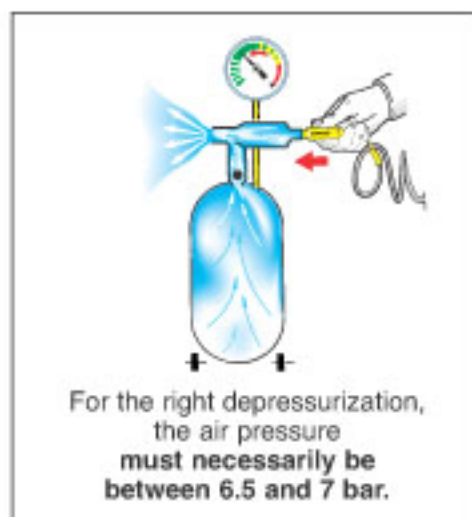
The oil must be hot (70/80°C).

Art. 43016 Portable air-operated oil drainer
16-litre tank
equipped with level-gauge.
supplied standard with probes (art. 45560) See page 122

N° 1 packing m^3 0,080 kg 10,5

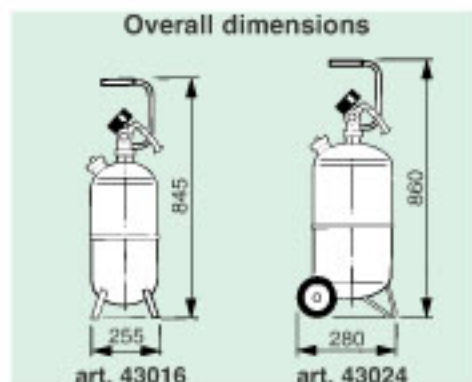
Art. 43024 Wheel-mounted air-operated oil drainer
24-litre tank
equipped with level-gauge.
supplied standard with probes (art. 45560) See page 122

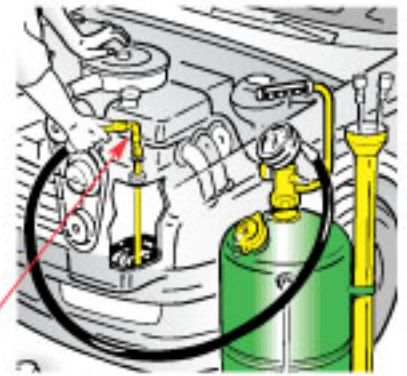
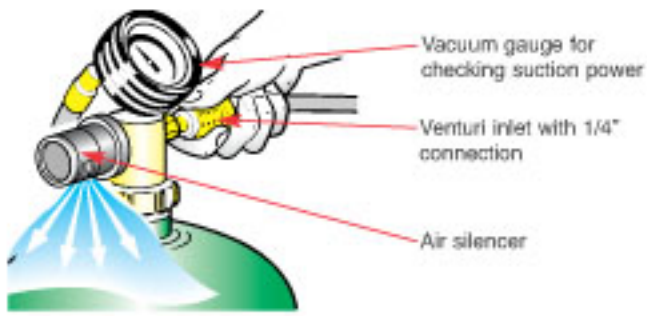
N° 1 packing m^3 0,090 kg 13,7



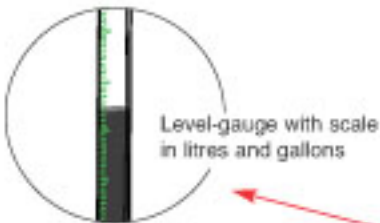
Article	43016	43024
Tank capacity	16 lt	24 lt
Max. draining capacity	13 lt	20 lt
Depressurization time	1 min	1-1,5 min
Air pressure for vacuum	7 bar	7 bar
Noise level	75 dB	75 dB
Suction speed with oil at 70-80°C, probes 6 mm.	1,5 - 2 lt/min	1,5 - 2 lt/min
Total suction capacity	9-10 lt	15-16 lt
Suction hose	2 m	2 m

Important: DO NOT drain brake fluids, fuels or flammable liquids of any kind, corrosive liquids.

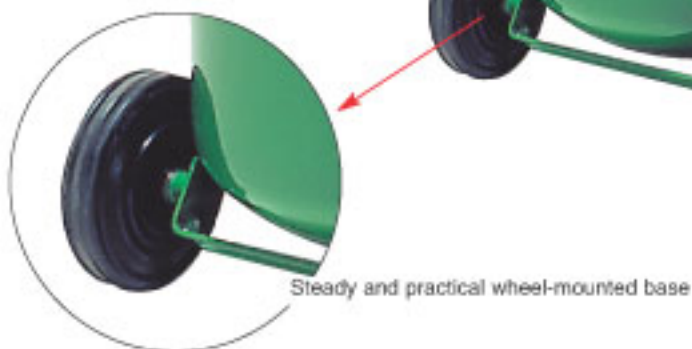




2-metre long suction hose with probe



Removable probe container



Tank emptying plug



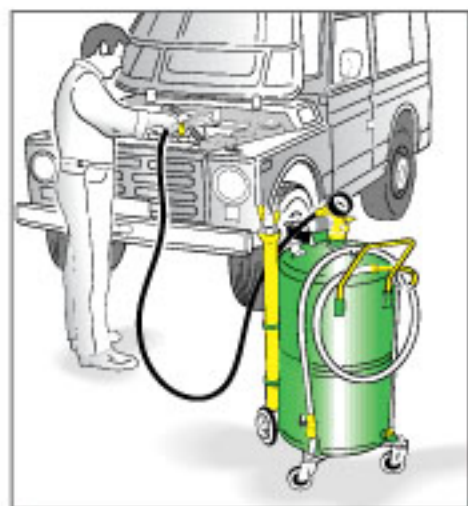
STANDARD



Art. 43060 65lt



Art. 43090 90lt



The **air-operated drainers** are ideal for quick engine oil change (by means of suction with the probe) of any motor vehicle: auto, truck, tractors, small aircraft, boats, etc. Once depressurized, they **work autonomously anywhere because they do not require continuous connection to the compressed-air system.**

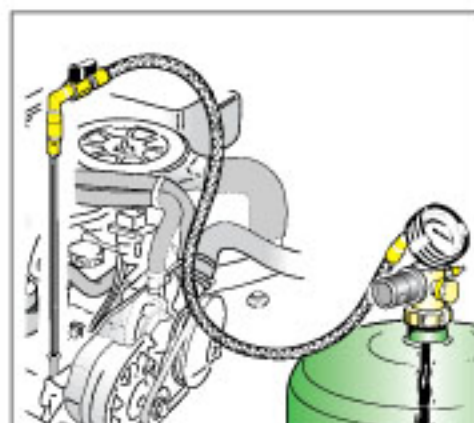
The oil must be hot (70/80°C).

Art. 43060 Air-operated oil drainer, with wheel-mounted 65-litre tank equipped with level-gauge, removable tool tray, supplied standard with set of probes (art. 45560)
See page 122

N° 2 packing m^3 0,230 kg 26,9

Art. 43090 Air-operated oil drainer, with wheel-mounted 90-litre tank equipped with level-gauge, removable tool tray, supplied standard with set of probes (art. 45560)
See page 122

N° 2 packing m^3 0,250 kg 31,4

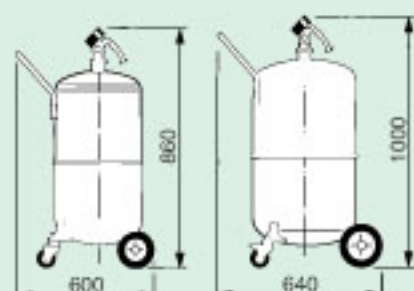


Handy for draining over 8 litres because the oil goes directly into the tank

Article	43060	43090
Tank capacity	65 lt	90 lt
Max. draining capacity	52 lt	75 lt
Air pressure for vacuum	7 bar	7 bar
Depressurization time	2 min	2,5-3 min
Noise level	75 dB	75 dB
Suction speed with oil at 70-80°C, probes 6 mm.	1,5-2 lt/min	1,5-2 lt/min
Total suction capacity	43-45 lt	60-65 lt
Suction hose	2 m	2 m
Draining hose	2 m	2 m
Max. pressure for draining	0,5 bar	0,5 bar

Important: DO NOT drain brake fluids, fuels or flammable liquids of any kind, corrosive liquids.

Overall dimensions



art. 43060

art. 43090



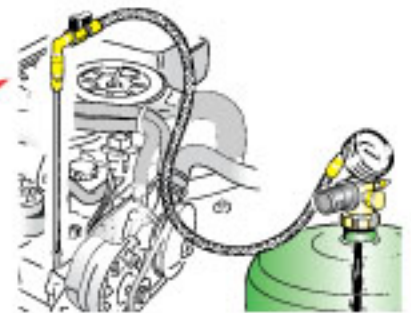
Vacuum gauge for checking suction power

For the right depressurization, the air pressure must necessarily be between 6.5 and 7 bar.

Air silencer



Removable tool tray



Suction hose length 2 metres with probe connection



Unit with safety valve 1 bar and universal cock 1/4" G

Removable probe container

Level-gauge with scale in litres and gallons

Tank emptying cock



2 m hose for draining of tank with air.



Steady and practical wheel-mounted base



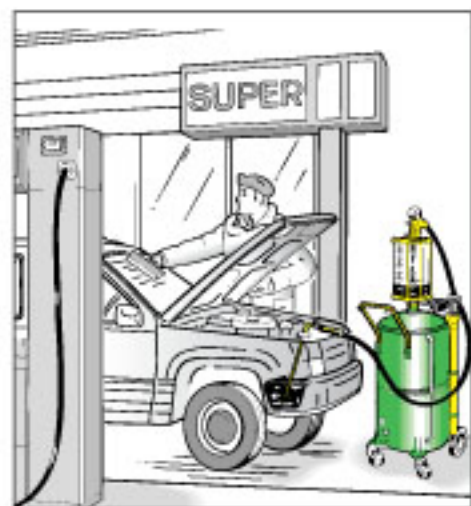
with CHAMBER



Art. 43065 65lt



Art. 43091 90lt



The air-operated drainers are ideal for quick engine oil change (by means of suction) of any motor vehicle.

The transparent chamber allows the quantity and quality of sucked oil to be checked immediately.

Once depressurized, they work autonomously anywhere because they do not require continuous connection to the compressed-air system.

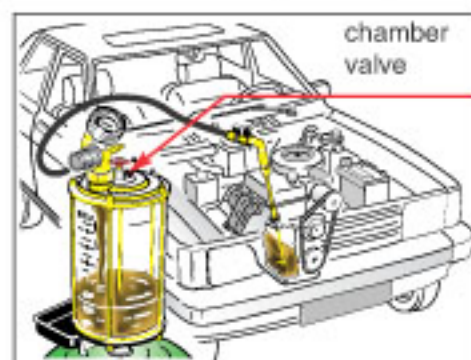
The oil must be hot (70/80°C).

Art. 43065 Air-operated oil drainer with transparent chamber, wheel-mounted 65-litre tank equipped with level-gauge, supplied with set of probes (art. 45560) See page 122

N° 2 packing m^3 0,230 kg 32,9

Art. 43091 Air-operated oil drainer with transparent chamber, wheel-mounted 90-litre tank equipped with level-gauge, supplied with set of probes (art. 45560) See page 122

N° 2 packing m^3 0,250 kg 36

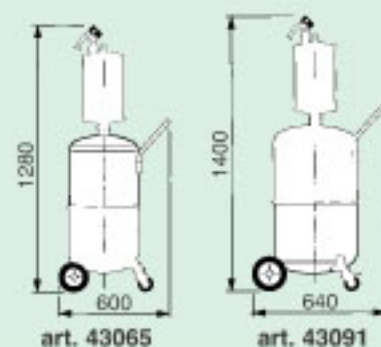


The chamber valve enables the drainer to be used with bowl vacuum only, thus preventing the tank vacuum from being discharged once the oil has been drained.

Article	43065	43095
Tank capacity	65 lt	90 lt
Max. draining capacity	52 lt	75 lt
Chamber capacity	8 lt	8 lt
Air pressure for vacuum	7 bar	7 bar
Depressurization time	2 min	2,5-3 min
Noise level	75 dB	75 dB
Suction speed with oil at 70-80°C, probes 6 mm.	1,5-2 lt/min	1,5-2 lt/min
Total suction capacity	43-45 lt	60-65 lt
Suction hose	2 m	2 m
Draining hose	2 m	2 m
Max. discharge pressure	0,5 bar	0,5 bar

Important: DO NOT drain brake fluids, fuels or flammable liquids of any kind, corrosive liquids.

Overall dimensions





For the right depressurization, the air pressure must necessarily be between 6.5 and 7 bar.

Vacuum gauge for checking suction power
Chamber-tank connection and oil drain plug

Transparent chamber with level-gauge



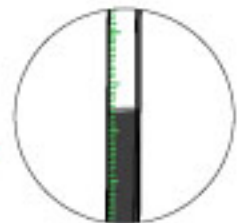
Suction hose length 2 metres with probe connection



Removable tool tray



Unit with safety valve 1 bar and universal cock 1/4" G



Level-gauge with scale in litres and gallons

Removable probe container

Tank emptying cock



Steady and practical wheel-mounted base



2 m hose for draining of tank with air.



All RAASM oil drainers used for changing engine oil come with a series of standard metal and flexible probes of various diameters, and with connections for engines with incorporated probes.

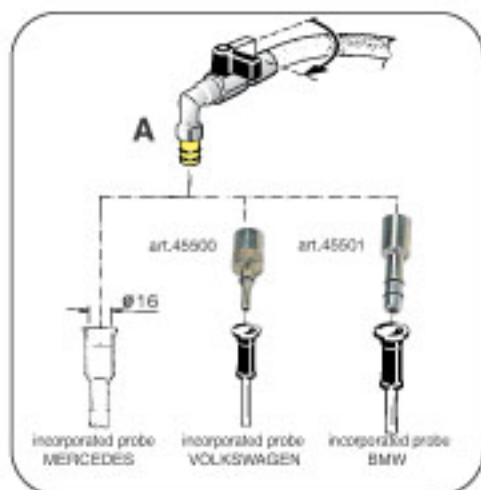


Art. 45560 Standard probe series

composed of:

one flexible probe \varnothing 5 mm - Length 700 mm	(Art. 45504)
one metal probe \varnothing 5 mm - Length 700 mm	(Art. 45505)
one flexible probe \varnothing 6 mm - Length 700 mm	(Art. 45506)
one metal probe \varnothing 6 mm - Length 700 mm	(Art. 45516)
one flexible probe \varnothing 7 mm - Length 1000 mm	(Art. 45517)
one flexible probe \varnothing 8 mm - Length 700 mm	(Art. 45518)
one connection for incorporated probes Volkswagen	(Art. 45500)
one connection for incorporated probes BMW	(Art. 45501)

Note: the same probes can be supplied individually.



How to fit the connections for motors with incorporated probes.

- for Mercedes vehicles, connect quick-connector **A** of the oil drainer directly to the dipstick housing.
- for Volkswagen, use connector art. 45500 inserting it in the dipstick housing.
- for BMW, use connector art. 45501, inserting it in the dipstick housing.

Probes supplied on request

These probes are supplied **on request** for non-standard uses on motor vehicles requiring a longer probe in order to drain the oil from the bottom of the sump.



Art. 45526 **Flexible probe** \varnothing 6 mm - Length 1500 mm

Art. 45527 **Flexible probe** \varnothing 7 mm - Length 1500 mm

Art. 45538 **Flexible probe** \varnothing 8 mm - Length 1500 mm
oil draining for trucks

Art. 45540 **Special flexible probe** \varnothing 12 mm - Length 700 mm
for quick draining.

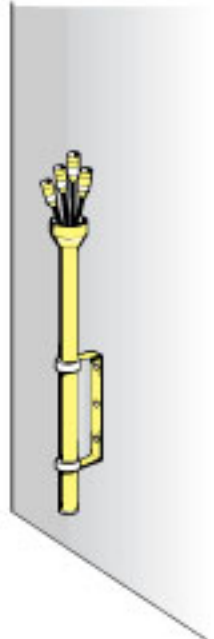
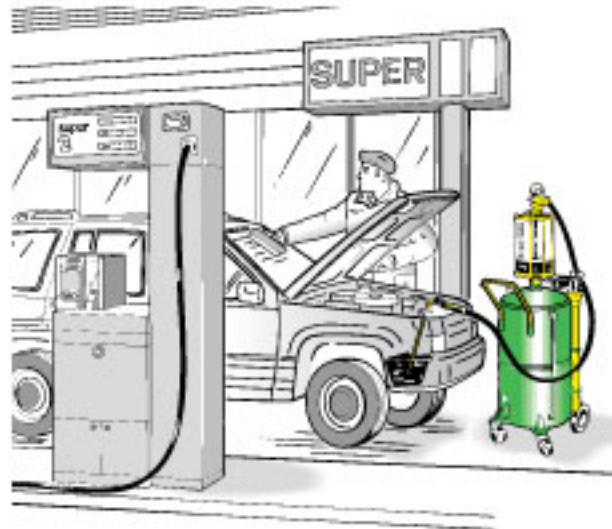
Already supplied with certain drainers, such as: art.45100-45110-45150-45160-45180-43116-43190-42164-42215



Art. 45570

The wall-mounted probe kit is useful for holding less used longer probes (such as, for example, art.45517 and the series supplied on request) thus avoiding having to carry them with the drainer.

Art. 45570 Wall-mounted probe kit



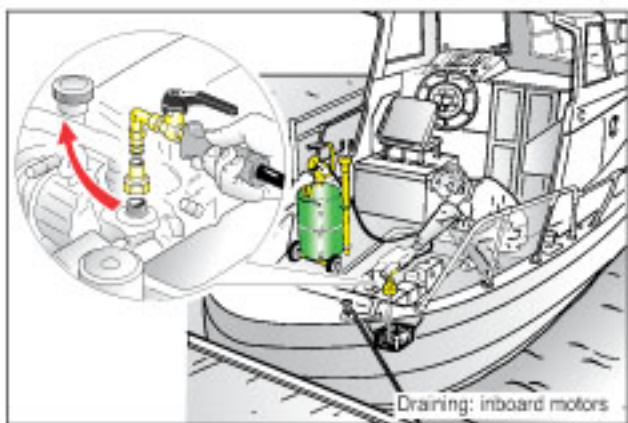
Art. 45550

Art. 45551

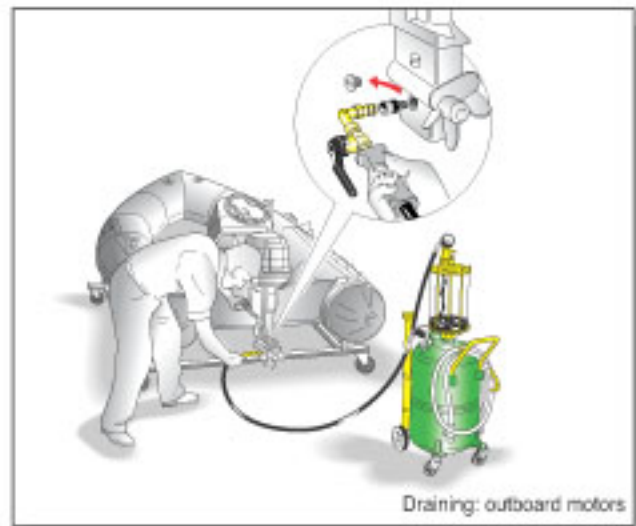
Special probes for boat engines supplied with the drainers, for boating art.43724 - 43760 -43765 -43790.

Art. 45550 Connection for outboard engines 3/8"

Art. 45551 Connection for inboard engines 3/4"



Draining: inboard motors



Draining: outboard motors

