



Ratio **1:1**  
Capacity **23 l/min**



Art. 33060



Art. 33061





Art. 33094

Art. 33096

**Air-operated transfer pumps 23 l/min** suitable for transferring **low-viscosity** (density) liquids such as oil, depleted oil, antifreeze liquid and allied products, **at short and medium distances**.

**They are equipped with special Teflon seals.**



**Art. 33060 Transfer pump 23 l/min** Ratio 1:1 for wall mounting (or fixed) **see page 66**

 N° 1 packing m<sup>3</sup> 0,006  kg 4,3



**Art. 33061 Extensible pump 23 l/min** Ratio 1:1 complete with foot valve with filter **KR3308** applicable to the personalized suction tube. **see page 66**

 N° 1 packing m<sup>3</sup> 0,006  kg 5

**Art. 33094 Transfer pump 23 l/min** Ratio 1:1 for 180/220 kg trade drums

 N° 1 packing m<sup>3</sup> 0,020  kg 6,3

**Art. 33096 Transfer pump 23 l/min** Ratio 1:1 for 180/220 kg trade drums with pump bung adaptor (art. 38042)

 N° 1 packing m<sup>3</sup> 0,020  kg 6,4

We recommend applying delivery hoses of min. 1/2", optimal 3/4".

N.B. The eventual application of a meter art.37701-37702-37711-37722 reduces the pump capacity to 13/15 litres max.

These pumps can only be coupled with meter 33701.

**WARNING:** Do not use flammable or corrosive liquids.

Article	33060	33061	33094 33096	33160	33161	33194 33196
Compression ratio	1:1	1:1	1:1	1:1	1:1	1:1
Air inlet connection	F 1/4" G.	F 1/4" G.	F 1/4" G.	F 1/4" G.	F 1/4" G.	F 1/4" G.
Oil outlet connection	F 1/2" G.	F 1/2" G.	F 1/2" G.	F 3/4" G.	F 3/4" G.	F 3/4" G.
Working pressure	6 - 8 bar	6 - 8 bar	6 - 8 bar	6 - 8 bar	6 - 8 bar	6 - 8 bar
Max. pressure	8 bar	8 bar	8 bar	8 bar	8 bar	8 bar
Air consumption	230 lt/min	230 lt/min	230 lt/min	270 lt/min	270 lt/min	270 lt/min
Relative capacity (free delivery at 6 bar)	23 lt/min	23 lt/min	23 lt/min	40 lt/min	40 lt/min	40 lt/min
Noise level	81 dB	81 dB	81 dB	81 dB	81 dB	81 dB
Temperature oil delivered	-10 +50°C	-10 +50°C	-10 +50°C	-10 +50°C	-10 +50°C	-10 +50°C
Max. viscosity oil delivered	80 SAE	80 SAE	80 SAE	130 SAE	130 SAE	130 SAE
Suitable for drums of	/	/	180 - 220 kg	/	/	180 - 220 kg
Weight	4 kg	4,5 kg	6 kg	5 kg	5,5 kg	6,5 kg
Suction tube length	/	/	940 mm	/	/	940 mm
Suction tube diameter	wall-mounted	/	42 mm	wall-mounted	/	42 mm



Ratio **1:1**  
Capacity **40 l/min**



Art. 33160    Art. 33161    Art. 33194    Art. 33196

**Air-operated transfer pumps 40 l/min** suitable for transferring **low/medium viscosity** (density) liquids such as oil, depleted oil, antifreeze liquid and allied products **at short and medium distances**.

They are equipped with **special Teflon seals**.

**Art. 33160 Transfer pump 40 l/min** Ratio 1:1 for wall mounting (or fixed) **see page 66**

N° 1 packing    m<sup>3</sup> 0,010    kg 5,3

**Art. 33161 Extensible pump 40 l/min** Ratio 1:1 complete with foot valve with filter **KR3308** applicable to the personalized suction tube. **see page 66**

N° 1 packing    m<sup>3</sup> 0,010    kg 6

**Art. 33194 Transfer pump 40 l/min** Ratio 1:1 for 180/220 kg trade drums

N° 1 packing    m<sup>3</sup> 0,020    kg 7,3

**Art. 33196 Transfer pump 40 l/min** Ratio 1:1 for 180/220 kg trade drums with pump bung adaptor (art. 38042)

N° 1 packing    m<sup>3</sup> 0,020    kg 7,4

**WARNING:** Do not use flammable or corrosive liquids.

We recommend applying delivery hoses of min. 1/2", optimal 3/4".

N.B. The eventual application of a meter art.37701-37702-37711-37722 reduces the pump capacity to 13/15 litres max.

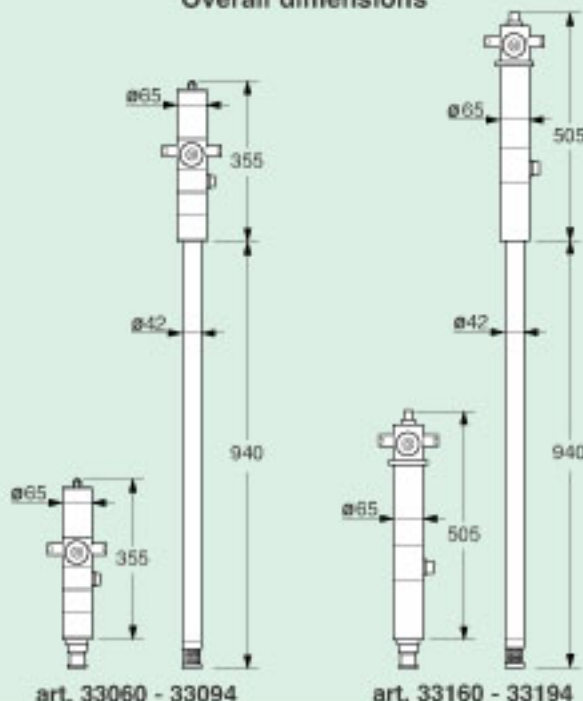
These pumps can only be coupled with meter 33701.

**Single- and double-acting**    see page 50-51

**Compression ratio**    see page 52

**Relative and real capacity**    see page 53

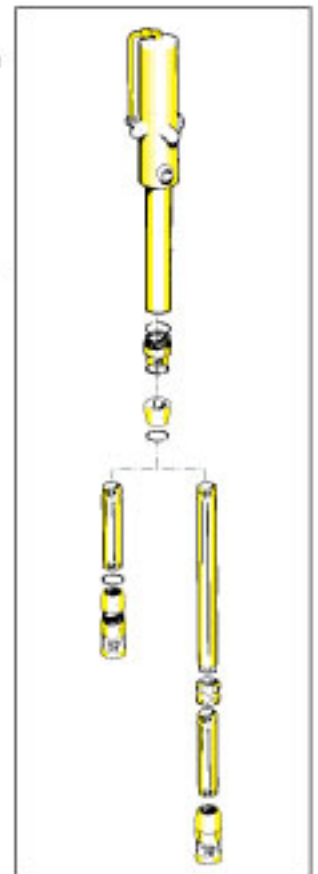
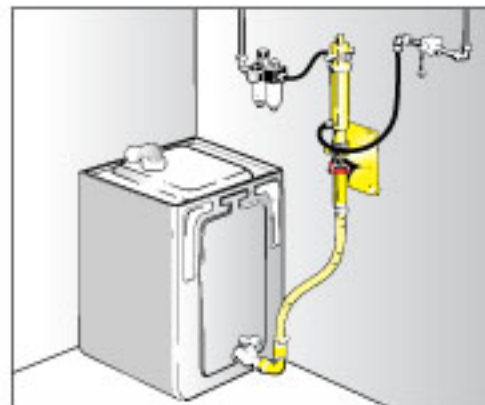
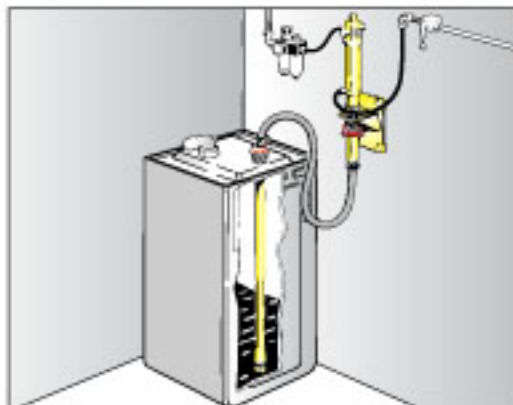
### Overall dimensions





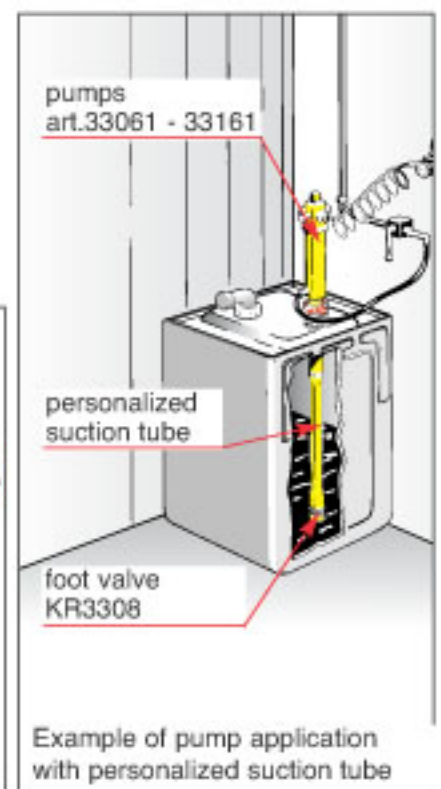
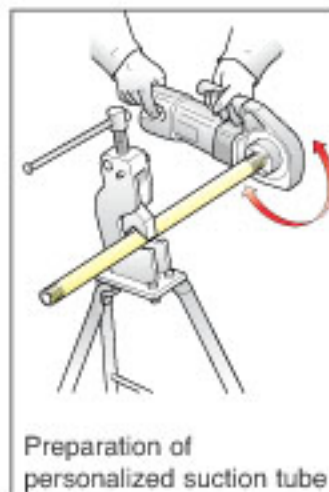
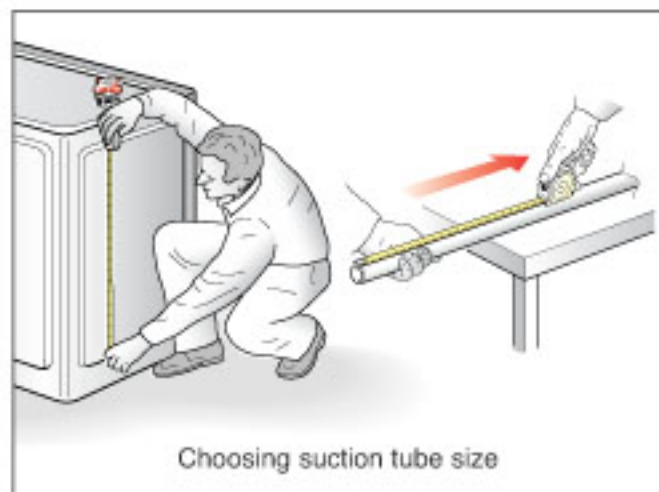
Wall-mounted pumps art.33060-33160 applied to wall or with fixed position with special accessories, offer a wide range of applications.  
see page 60 - 70 - 71.

The same pumps, fitted with modular extensions, are arranged for a multitude of uses,  
see page 92 - 93.



The extensible pumps (Art. 33061 - 33161) can be fitted with personalized 1" suction tubes for use in tanks or drums of various sizes.

A pump with personalized suction tube can be obtained by threading at 1" G. the two ends of a water pipe of the desired length and applied between the pump and the foot valve (KR3308).





for EMPTYING 'TANKS'



Art. 33125 (23 l/min)

art.33119

art.33126

art.33127



### Wall kit with pump 23 l/min

is the easiest and handiest solution for suction emptying of mobile equipment, oil drainers and suction devices, connecting them to a quick-release valve.

The depleted oil sucked by the pump is conveyed, through the fixed system, directly to the collection or storage tank.

- Art. 33125 Wall kit for emptying with pump art.33060 23 l/min complete with:
- art. 33115 wall bracket
  - art. 38026 suction hose

N° 1 packing m<sup>3</sup> 0,029 kg 8,4

Art. 33119 Nipples 1" x 3/4" G connections M/M

Art. 33126 Female quick-connector with check valve, thread 3/4" F

Art. 33127 Male quick-connector with check valve, thread 3/4" F

art.33115

art.33060

art.38026

Threaded 12 female union applied to the hose, suitable for taking a suitable quick-connector (according to choice) for connecting pump and various drainers for emptying.

Art. 33126

Art. 33127

Article 33126 is connected to the hose of pump art. 33125.

Article 33127 is connected to each "tank" being emptied.



for TRANSFER



Art. 33100 (23 lt/min)



Art. 33200 (40 lt/min)



Practical **wall kit for drums**, for transferring oil, antifreeze, Diesel fuel, etc. from storage containers to other containers or service points.



**Art. 33100 Modular kit for transfer from drums with pump art. 33060 - 23 lt/min** complete with:

- art. 33115 Wall bracket
- art. 38026 Suction hose
- art. 38027 Rigid suction tube
- art. 38042 Bung adaptor

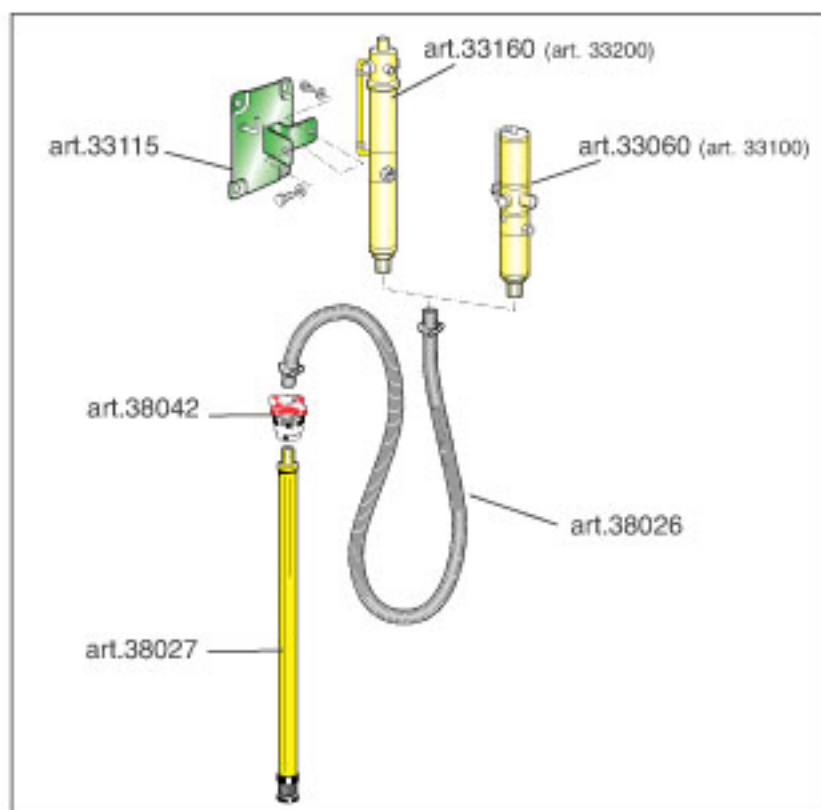
 N° 1 packing    m<sup>3</sup> 0,029     kg 10,4

**Art. 33200 Modular kit for transfer from drums with pump art. 33160 - 40 lt/min** complete with:

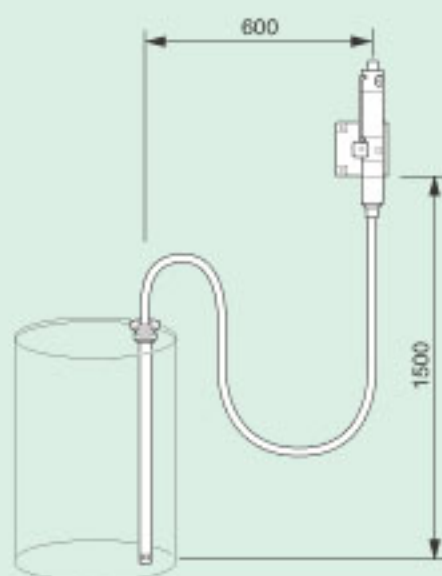
- art. 33115 Wall bracket
- art. 38026 Suction hose
- art. 38027 Rigid suction tube
- art. 38042 Bung adaptor

 N° 1 packing    m<sup>3</sup> 0,029     kg 11,4

The transfer modular kit is also suitable for application in fixed systems for transferring liquids from the storage point to the service station.



## INSTALLATION DIMENSIONS



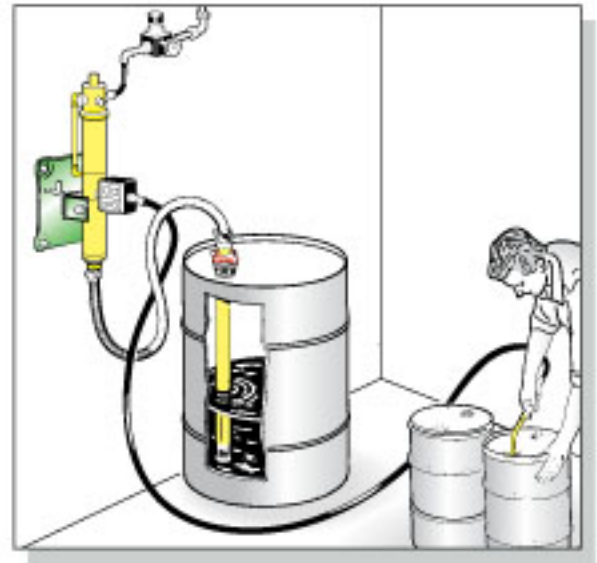
art. 33100 - 33200



for TRANSFER



Art. 33250 (40 lt/min)



**Wall-mounted transfer pump for drums:** handy for transferring oil, antifreeze, Diesel fuel, etc. from storage containers to other containers or usage points.

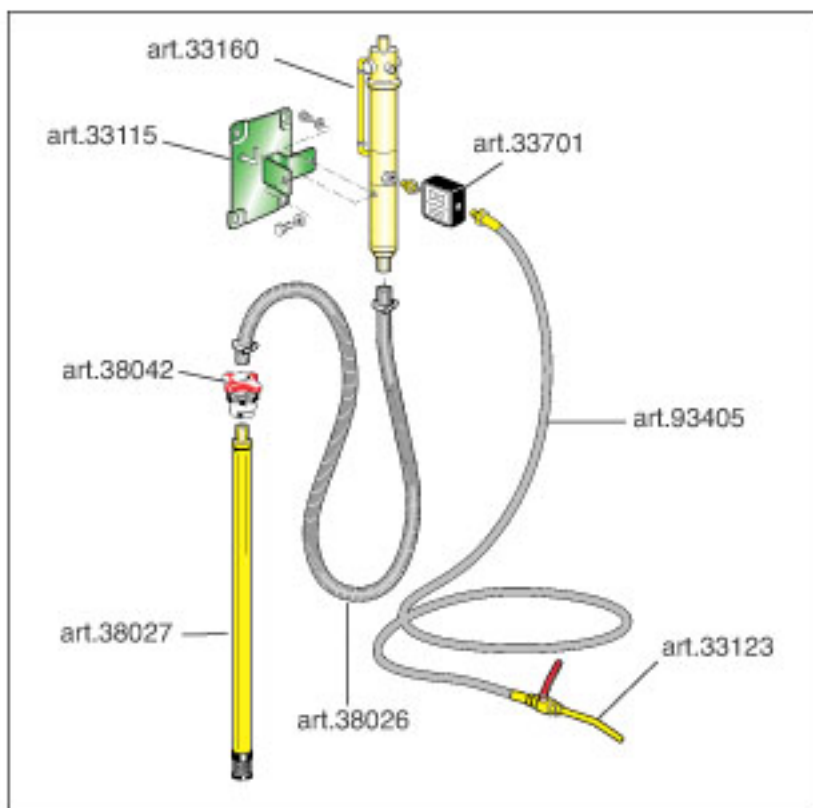
Supplied with **digital meter** for controlling the amount of liquid delivered.

**Art. 33250 Wall kit for transfer from drums with pump art. 33160 - 40 lt/min** complete with:

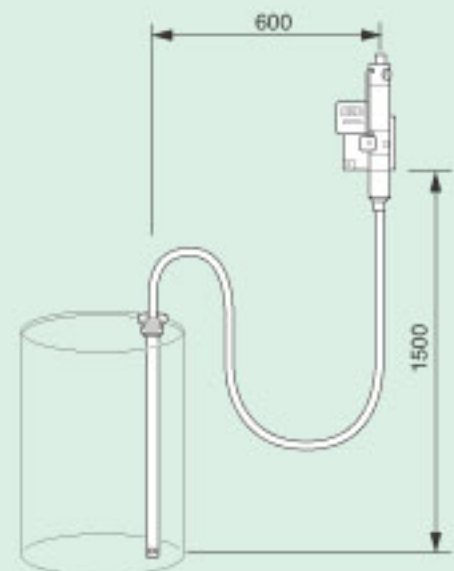
- art. 33701 Digital meter
- art. 33115 Wall bracket
- art. 38026 Suction hose
- art. 38027 Rigid suction tube
- art. 38042 Bung adaptor
- art. 93405 Hose 3/4" - 5 m
- art. 33123 Delivery nozzle

№ 2 packing m<sup>3</sup> 0,070 kg 17,5

The wall-mounted transfer pump with digital meter is also suitable for use in fixed systems, for transferring liquids from the storage point to the service station.



### INSTALLATION DIMENSIONS



art. 33250



Art. 33115

Art. 33116

Art. 33117

Art. 33118

Art. 33119

Art. 38071

Art. 33112

Art. 33113



Art. 38042



Perfect  
clamping of  
pump to drum

Art. 38027



Art. 38026



Art. 91204

Art. 93405

The wide range of pump accessories enables the operator to create combinations or kits that are more suitable for the specific needs of use.

**Art. 33115 Steel wall bracket**  
for wall fixing of pumps art. 33060-33160

**Art. 33116 Nipples 1" x 1" G. connections M/M**

**Art. 33117 Nipples 3/4" x 3/4" G. connections M/M**

**Art. 33118 Nipples 1/2" x 3/4" G. connections M/M**

**Art. 33119 Nipples 1" x 3/4" G. connections M/M**

**Art. 38071 Nipples 1/2" x 1/2" G. connections M/M**

**Art. 33112 Nipples 3/4"G x 3/4"NPT - M/F**

**Art. 33113 Nipples 1/2"G x 3/4"NPT - M/F**

**Art. 38042 Bung adaptor diameter 42 mm with double casing, for drum pumps**  
Equipped with :  
- one flexible steel band, to guarantee perfect clamping of pump to drum  
- key to facilitate clamping to drum and release.

**Art. 38026 Suction hose 1" for wall pumps**  
- length 2 m  
- complete with two hose clamps

**Art. 38027 Rigid suction tube for wall pumps**  
- length 940 mm  
- diameter 42 mm  
- adaptor for hose connection  
- foot valve with filter

**Art. 91204 Delivery hose 1/2"**  
with connections M/F,  
length 4 m 60 bar

**Art. 93405 Delivery hose 3/4"**  
with connections M/F,  
length 5 m 60 bar



**Art. 33123 Ball cock 3/4" G. complete with terminal**  
 Suitable for high capacity transfers and can be coupled with 3/4" tube art. 93405

**Art. 33122 Gun for transferring, oil, depleted oil, and antifreeze liquids, high capacity.**  
 Equipped with F 3/4" G. joint (max. pressure 8 bar) suitable for high capacity transfers and can be coupled with 3/4" tube art. 93405. Not suitable for pumps art. 33160 - 33161 - 33194 - 33196

**Art. 33120 Gun for transferring, oil, depleted oil, and antifreeze liquids.**  
 Equipped with joint F 1/2" G. and rigid terminal length 200 mm, ø 20 mm



**Art. 33701 Digital meter for oil and antifreeze liquid suitable for high capacity transfer pump.**  
 Can be used on pump or on systems. Thread 3/4" F/F. Not type-approved for public use.

Article	33701
Inlet connection	3/4" F
Outlet connection	3/4" F
Minimum capacity	L/1' - 5
Maximum capacity	L/1' - 150
Minimum pressure	bar 0,5
Maximum pressure	bar 70
Temperature	max. 60°C
Viscosity	max. SAE 240
Tolerance	± 0,5%
Material	aluminium
Partial	XXXX
Totalizator	XXXXXX
Dimensions	112x90x80 mm

(\*) Article not produced by RAASM.

