



The Standard in Information and Diagnostic Systems

MODIS™

Modular Diagnostic Information System

Introducing the first release of 2004 for MODIS™ users. The contents of this package represent significant overall enhancements to the diagnostic power of MODIS™, some of the features you can expect to find include:

- Scanner™ On-Board Diagnostic Tool
- Software and Cables Covering 18 Automotive Manufacturers
- 4-Channel Automotive Lab and Ignition Scope
- Powerful Digital Volt Ohm Meter
- Expandable Diagnostic Platform with 7" Colour LCD

Display Device

- Colour, liquid crystal, full VGA backlit display 640 x 480
- Mouse style, multidirectional thumb pad navigation
- Infrared output for compatible wireless printers
- USB and serial ports for future expandability
- VGA output for remote display or projection interface
- Two Compact Flash slots for regular software updates, storage, and wireless communication



Multiple Secondary Ignition capability

- Ignition scope now actively displays the full ignition system status
- Parade, Raster, Superimposed and 5ms Single Ignition Views
- Conventional, Wasted Spark, and COP ignition compatible
- SIA 2000 required

Ignition Scope

Secondary Ignition Parade Mode

- Parade cylinder firing in a series across one channel – for distributor and direct ignitions
- Parade cylinder firing in a series across two channels for wasted spark systems

Multiple Secondary Ignition

- Raster and superimposed functions aid waveform diagnosis by stacking the firing cylinders

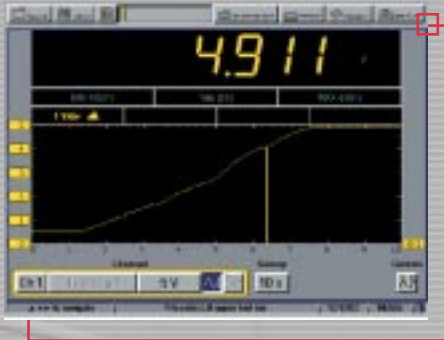
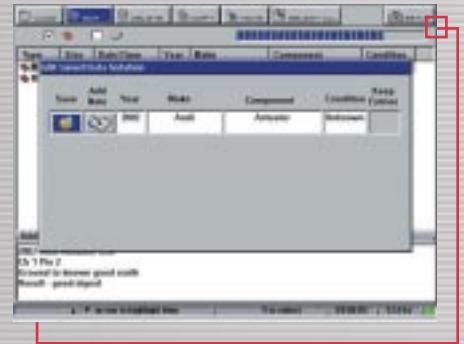
Single Cylinder Mode

- New Cylinder 5ms mode displays a single cylinder regardless of ignition type
- The auto trigger on RPM produces a consistent view of the waveform

flexibility, adaptability, profitability

Full Data Management capability

- Identify and save your files to internal memory or utilise the compact flash slot to store unlimited files for future reference
- Build a personal database of known good, bad and unknown waveforms
- Add notes via a USB keyboard



Dual Graphing Multimeter

- Actively graph 2 channels in the Multi-Meter mode
- Display intermittent faults and glitches like no other Multi-Meter
- Apply the power of lab scope into an easy to use application

Scanner™ On-Board Diagnostics Features

- Enhanced coverage of multiple systems for 18 automotive manufactures
- Includes code retrieval with detailed definitions, code clearing, live data for most systems, functional tests, and movie capture for over 5,000 vehicle configurations
- Parameter data readings presented in multiple graph modes or table list
- Regular software updates deliver powerful new functionality

Alfa Romeo, Fiat, Lancia

- Coverage: 1986 - 2002
- 72 engine systems including diesel
- 5 other systems including automatic transmission, ABS, Airbag

Audi, Seat, Skoda, and Volkswagen

- Coverage: 1986 - 2003
- 49 engine systems plus all EDC diesel systems
- 76 other systems including automatic transmission, ABS, Airbag

BMW

- Coverage: 1986 - 2003
- 36 engine systems including diesel
- 48 other systems including automatic transmission, ABS, Airbag

Citroën

- Coverage: 1986 - 2003
- 37 engine systems including diesel
- 19 other systems including automatic transmission, ABS, Airbag

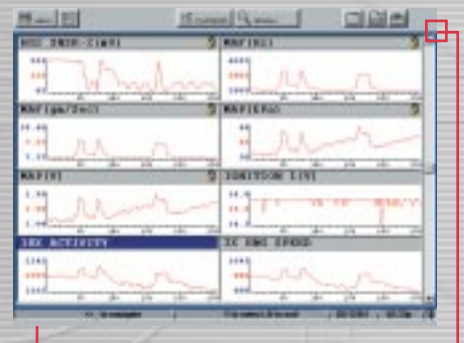
Ford

- Coverage: 1986 - 2002
- 12 engine systems including diesel
- 31 other self-detecting systems including automatic transmission, ABS, Airbag

Land Rover, Range Rover

- Coverage: 1987 - 2003
- Other systems including Airbag

FAST



Mercedes

- Coverage: 1981 - 2003
- 35 engine systems including diesel
- 2 other systems including automatic transmission

MG Rover

- Coverage: 1987 - 2003
- 10 engine systems including diesel
- 5 other systems including automatic transmission, ABS, Airbag

Opel and Vauxhall

- Coverage: 1986 - 2001
- 32 engine systems including diesel
- 21 other systems including automatic transmission, ABS, Airbag

Peugeot

- Coverage: 1986 - 2003
- 38 engine systems including diesel
- 19 other systems including automatic transmission, ABS, Airbag

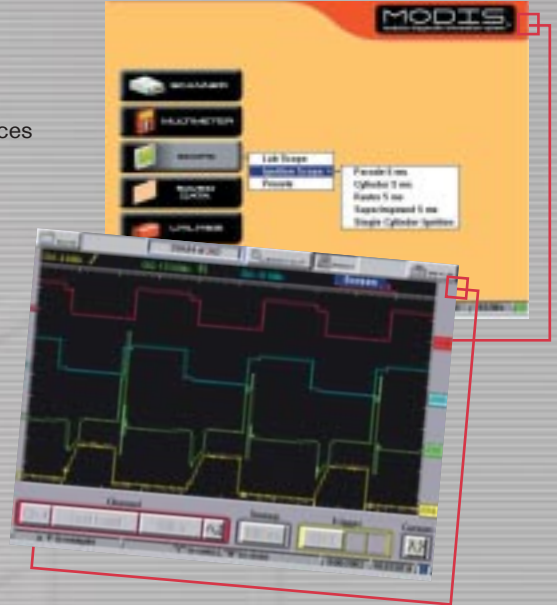
Renault

- Coverage: 1986 - 2003
- 33 engine systems including diesel
- 21 other systems including automatic transmission, ABS, Airbag

*System coverage may vary by model and year

Lab Scope Plug-In

- 4-Channel Scope: Captures and displays "live" signals with up to four traces graphed from 6 million samples every second
- Displays digital readout along with each waveform to determine voltage at any selected point on the waveform as well as min and max values
- Snapshot: Capture and review up to 263 sweeps continuously saved into a buffer
- Easy Scroll: Streamlines selection of menu and toolbar items
- AC Coupling: Provides the ability to enlarge the alternating current (AC) component of a signal for closer examination
- Invert: Flip waveform to adjust for flexible hookups and easier viewing
- Autofind: Automatically pre-configure the vertical scale
- Load Configuration: Designed to allow the user to select factory preset screens or define a custom setup to retrieve for regular use; frequent tests are automatically configured to help diagnose the performance of sensors, actuators and circuits on a vehicle



EASY POWERFUL



Power/Weight/Dimensions

- Batteries: Nickel-metal hydride battery pack
- Weight 5lbs. 11 oz. with plug-in modules and battery
- Dimensions:

Width	Depth	Height	Weight with Plug-ins
14 inches	3-3/8 inches	7-3/4 inches	5-11 lbs.-oz.
356 mm	86mm	197 mm	2579 g

DVOM

- Auto scaling, high-impedance DVOM measurement system
- Pinpoint measurement of:
 - DC volts
 - AC Volts RMS
 - Ohms
 - Continuity with audible beep
- Digital display turns red to alert out-of-calibration condition
- Out-of-calibration alert; digital display turns red to alert
- Out-of-calibration condition
- Min and Max capture displays drop and peak values

Lab Scope and DVOM Standard Accessories

- 4-lead set
- Channels 1 and 2 are shielded
- Secondary probe
- RPM probe

MODIS™ System Optional Accessories

Fan Filters (5 pack)	EAK0253B02A
Auxiliary Battery Pack	EAK0253B05A
Additional Battery Pack Charger	EAA0273B06A1
Low Amps Probe	EETA111A
Soft Carry Case	EEMS111A06
SIA 2000	EAK0242E14A

Lab Scope/DVOM Module Optional Accessories

- Ignition Coil Adapters

Stick	EAC0056L03A
Single Flag	EAC0056L00A
Two Flag	EAC0056L01A
Three Flag	EAC0056L02A
- Split Lead Adapter EEMS301A05
- 100 PSI Pressure / Vacuum Transducer w/cable EEPV302AL
- 500 Pressure Transducer w/cable EEPV302AT
- 5000 Pressure Transducer w/cable EEPV302AH
- Transducer Extension Cable EAX0024B30A
- Capabilities with Optional Probes
 - DC current amps, pressure, vacuum, secondary ignition, probe for coil-on-coil, distributorless ignition

Specifications

Lab Scope

Function	Range	Accuracy/Comments
Channels	1 - 4	Common Ground
Sample Rate	6.0 MS/S	Simultaneous Across 4 Channels @ 1.5 MS/S per Channel
Bandwidth	V dc - 3 Mhz	3 dB point @ MHz
Input Impedance	10 MOhm @ V dc 5.8 kOhm @ 3 MHz	All channels
VDC (Full Scale)	100 / 50 / 20 / 10 / 5 / 2 / 1 V dc 500 / 200 / 100 m V	
V~ (Full Scale)	50 / 20 / 10 / 5 / 2 / 1 V dc	
Peak to Peak Voltage	500 / 200 / 100 mV	
RPM Measurement	0 - 10000 RPM	
Secondary Ignition	1 - 50 KV	Channels 1 and 2

DVOM

Function	Range	Comments
Input Channels	3 & 4	Isolated Ground
Input Impedance	10 MOhm	
Glitch Capture	± 50 ms	
Resistance	40 / 4 MOhm 400 / 40 / 4 kOhm 400 Ohm	Auto Ranging
V dc/V ac	40 / 4 / 0.400	Auto Ranging
V ac in Peak to Peak Voltages		
Diode Test	2 Volt scale	



Sun Diagnostics U.K.

Horsley's Fields, King's Lynn, Norfolk PE30 5DD
 T: +44 (0) 1553 692422 F: +44 (0) 1553 774682
 E: techsales.uk@snapon.com
 W: www.sun-diagnostics.com

Sun Diagnostics Europe

E: ies@sun-diagnostics.com